



Noyes
Museum of Art
STOCKTON UNIVERSITY

THE NOYES MUSEUM OF ART OF STOCKTON UNIVERSITY PRESENTS:

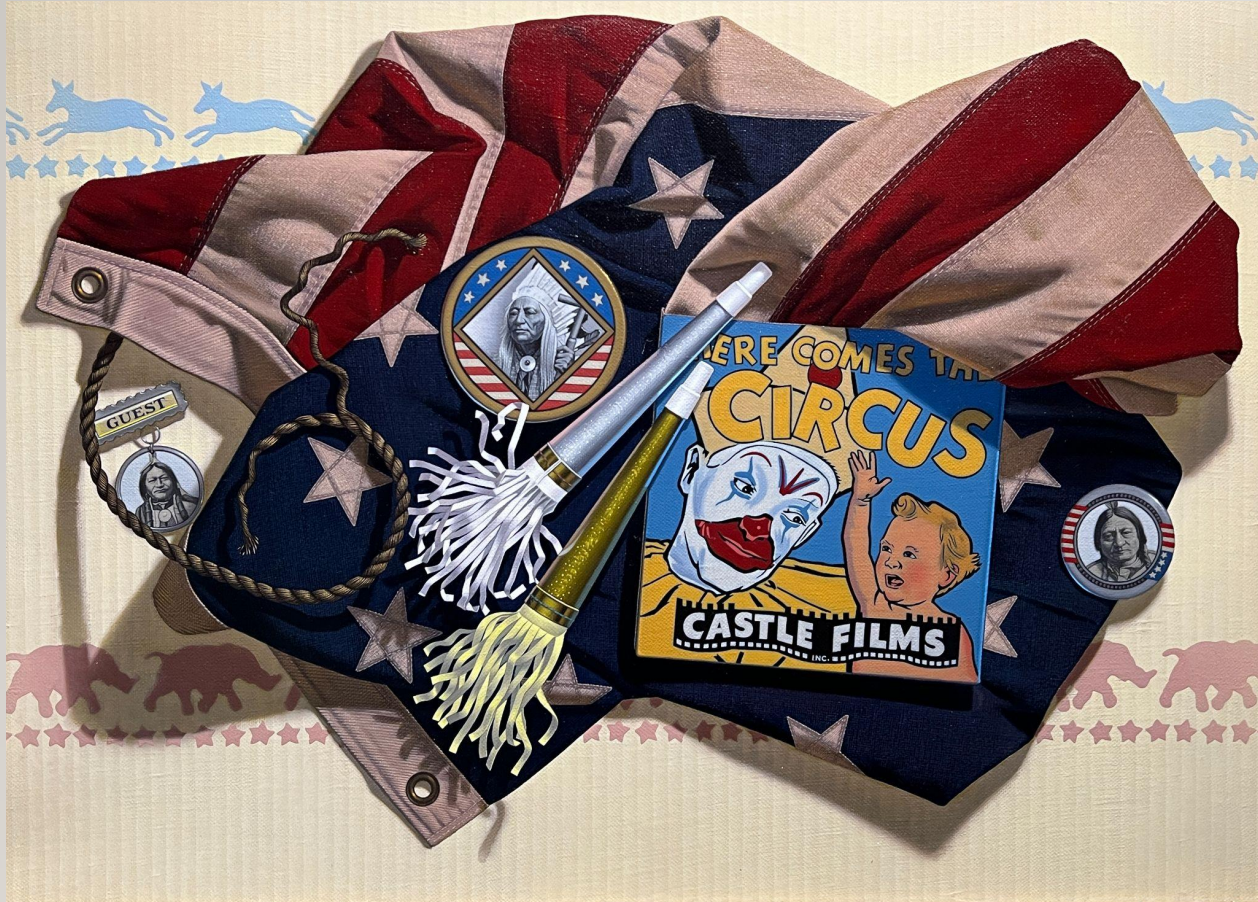
GARY ERBE'S MAGICAL WORLD

About the exhibition:

This collection of eye-catching oil-on-canvas and mixed media pieces, created by Erbe over the span of 40 years. Erbe's work combines flat space forms that are exaggerated and enhanced by shadow, light and color, resulting in pure three-dimensional illusion.

While there are and will always be elements of Trompe L'oeil in his work, he has less of an interest in fooling the eye in favor of stimulating the mind. Erbe states that "Over the years, I have explored the idiom of abstraction and cubism and how these modern principles can be integrated into Trompe L'oeil. I welcome the challenge of bridging the gap between modern art and realism without abandoning technique. I believe I have found ways of circumventing the so-called rules of Trompe L'oeil in favor of originality, inventiveness and creativity. Most of my work since 1970 is highly complex and can be engaged on many different levels. I have underscored the point that my work has less to do with the tenets of Trompe L'oeil and far more to do with the creative process of discovery."





Gary Erbe
American Party, 2009
Oil on canvas
20 x 30 inches



Gary Erbe
Spaghetti Western, 1974
Oil on Canvas
39 x 49 inches



Gary Erbe
Jazz, 2017
Oil on canvas
66 x 58 inches



Gary Erbe
Arrangement in Black and White, 2020
Oil on canvas
28 x 20 inches



Gary Erbe
The Yellow Bow, 1996
Oil on canvas
21 x 36 inches

***The Yellow Bow*, 1996**

Oil on canvas

Lent by the Artist:

While Erbe carefully arranges the objects that appear in each of his compositions, works like *The Yellow Bow* are more insistently about two-dimensional design. Recalling the cubist compositions of Pablo Picasso and Georges Braque, these works convey little illusionistic depth and focus more on the disposition of color, shape and form across the canvas. Like the Cubist masters, Erbe is attracted to musical instruments and sheet music for their abstract design elements. Here, objects serve as shapes and colors, rather than conveyors of meaning or content.





Gary Erbe
The pressure of Time, 1970
Oil on canvas
29 x 23 inches



The pressure of Time, 1970

Oil on canvas

Lent by the Artist

This poignant work refers to a tragic event in the artist's life—the suicide of a friend. Depicting an alarm clock beneath a heavy weight held by a short chain and supported by fragile string beans, Erbe sensitively conveys the tremendous pressure that weighted on his friend's psyche as he reached his fateful decision. The razor blade that cuts through the chain link suggests the gravity of slow deliberation



Gary Erbe
Chapter One: Humanity, 1982
Oil on canvas
24 x 32 inches



Gary Erbe

Virtuoso, 1982

Oil on canvas

12 x 9.5 inches

Loan from Collection of the Brandywine
Museum of Art



Virtuoso, 1982

Oil on canvas

Brandywine River Museum of Art, Museum Volunteers'
Purchase Fund, 2010

Executed in the early 1980s, *Virtuoso* is a transitional work between the artist's illusionistic Trompe L'oeil paintings of the 1970s and the later more insistently two-dimensional compositions that synthesize traditional Trompe L'oeil with modernist tendencies. While still illusionistic in their depiction of materials, such as cardboard, burlap, and wrinkled paper, in his later works Erbe often deconstructs his objects, creating abstract forms and a tension between verisimilitude and abstraction in the final composition.



Gary Erbe
Soft Guitar with Tambourine, 2023
Oil on canvas
30 x 37 inches



Gary Erbe
The Green Eyed-Amp, 2020
Oil on canvas
44 x 36 inches



Gary Erbe
Studio Antics, 1997
Oil on canvas
35 x 52 inches



Gary Erbe
Electric Cow, 2002
Oil on canvas
49 x 73 inches

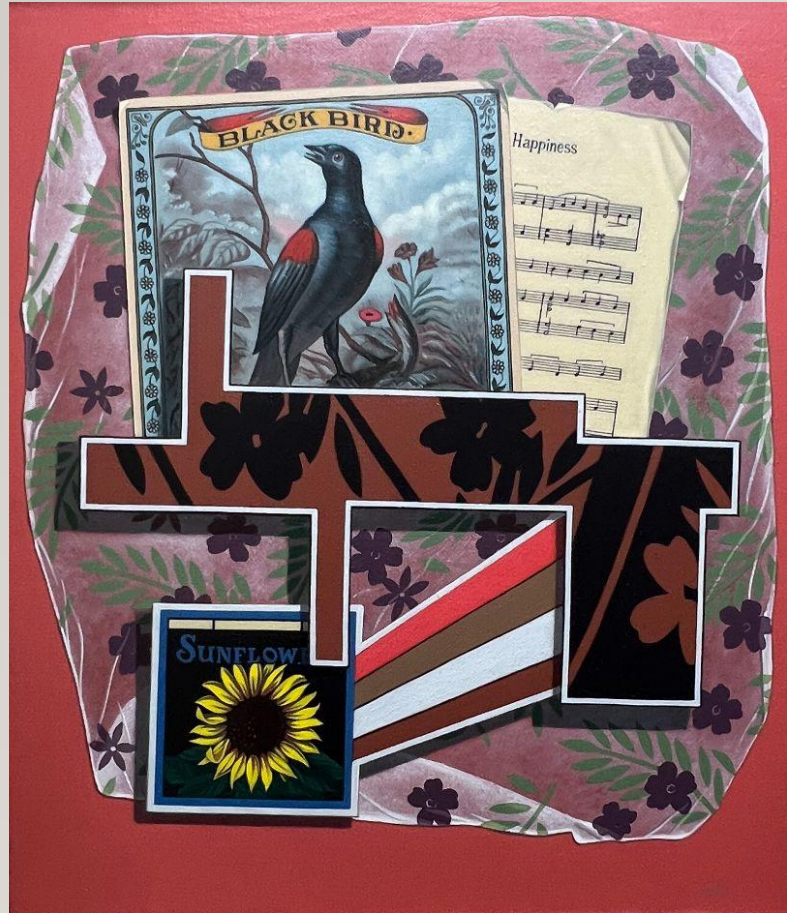


Gary Erbe
The Curious Mind of a Genius, 2022
Oil on canvas
35 x 56 inches

About *The Curious Mind of a Genius*:

Edmund Frank Cook was born September 10, 1929. He grew up on a farm in Montville, N.J. and graduated from Boonton N.J. high school in 1946. His first job after high school was at the New York Stock Exchange where he was a messenger delivering information to the different posts on the floor of the Exchange. Edmund left the NY Stock Exchange a year later and started to work at a small electronic business near his home. He liked working with electronics and obtained a position with a larger more commercial business. When the Korean War started Edmund enlisted in the Air Force. because of his background in electronics he was placed in a radar school. He did so well his next assignment was to teach radar. A new radar station was being built in Germany to protect planes flying in a nearby flight path. Edmund was sent to this station. His last duty there he was in charge of the maintenance and repair of the large outdoor antenna. Edmund liked Germany and the people being there gave him the opportunity to visit laboratories. He also started attending Fairleigh Dickinson University to obtain a degree in Business. He was also approved for Top Secret Clearance at Bell Laboratories and was doing work for the government at that time. Edmund's only other top secret work was years later when he had to travel down south to go to a secret government building located in a farmer's field. He needed a secret code to open the front door and another code to open the inside door. In 1959, Edmund married Ellen Gilardoni and they bought a home in Parsippany, N.J. He graduated from Fairleigh Dickinson University May 1961 with a Bachelor of Science Degree and continued employment with Bell Labs relocated two years later to Massachusetts. Edmund and Ellen bought an 1866 house in Salem NH, a short ride from the lab in MA. In 1989 Edmund retired from his 35 years with Bell Labs. Edmund joined the golf club and when he retired, he golfed 3 days a week most of the year. He would repair items for his use or give them to others, Ed would gladly repair items for free. Edmund's hands were always busy doing things for people and his mind was busy thinking how he could do things better and how he could help people. He passed away in October 27, 2020 at the age of 91.





Gary Erbe
The Nature of Things, 2023
Oil on canvas
24 x 20 inches



Gary Erbe
The Black Table, 2020
Oil on canvas
26 x 48 inches



Gary Erbe
Lifeline, 1996
Oil on canvas
38 x 34 inches



Gary Erbe
Strings, 2002
Oil on canvas
30 x 37 inches



Gary Erbe
Master of the Ruptured Word, 2015
Oil on canvas
30 x 37 inches

About *Master of the Ruptured World*:

Master of the Ruptured Word pays tribute to America's great early-19th century master of Gothic literature, Edgar Allan Poe, whose photograph is held by the skeletal hand. The scrolled paper reveals partial titles of some of the author's most famous works—"The Murders in the Rue Morgue," "The Black Cat," and "The Raven,"—while "The Pit and the Pendulum" is evoked by its titular object. Other items, such as the straight razor eyes, and skeletons seen at the top of the composition, add to the macabre sentiment of the subject, as does the black and orange color scheme suggesting a ghoulish Halloween. The surprised eye of actor Peter Lorre, seen behind the image of Po, invokes crime, mystery and horror films that share Poe's sensibility.

In this work, Erbe also honors his brother, who is particularly fond of Poe and is a poet in his own right. At the right, the letters forming the name Erbe refer specifically to his brother shortening his name to "Erb."



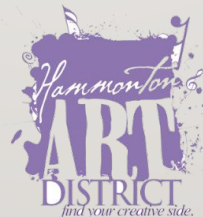
Gary Erbe
Rocky Mountain Winter, 2016
Oil on canvas
54 x 75 inches



Noyes

Museum of Art
STOCKTON UNIVERSITY

© Gary Erbe



Supported in part by a grant from the NJ Department of State, Division of Travel and Tourism.